

(b) Socks-Proxy

To use external services via other protocols you can use the alternate SOCKS 5 proxy server.

- host name: **socks.hs-karlsruhe.de**
- access: TCP / Port 1080
- user name: <eight-digit IZ-username>

A list of apps, which can be used through this proxy can be found under:

<https://www.hs-karlsruhe.de/hochschule/einrichtungen/iz/servicekatalog/proxy/>

To use applications that do not support SOCKS, encapsulation is recommended (keyword: socksify).

Storage

All over the HsKA network a distributed file system is in use. Root directory:

\\ads.hs-karlsruhe.de\dfs (or **\\ads\dfs**)

It contains the directories of the departments. The home directory (drive letter N), which is the individual user file storage is located at:

\\ads\dfs\hs\homes\.nt

How can I configure my own website?

Locate the folder **.public_html** in your home directory at: **\\ads\dfs\hs\homes\.public_html**

This directory represents the root of your website: **http://www.home.hs-karlsruhe.de/~<IZ-username>**

It is also possible to access your website via HTTPS. You can manage the access via **.htaccess** files.

How do I read my HsKA emails?

You can access your mailbox via **webmail**, **Microsoft Outlook**, an **EWS** compatible app on your smartphone or **ActiveSync** (only for employees).

More details on the setup can be found in the flyer „**Basic IT-Services**“

Basic email settings (for old accounts)

The following accesses are possible within the HsKA network:

- | | |
|-------------------------|---|
| Mail server protocol | POP3 |
| • incoming mail server: | pop.hs-karlsruhe.de |
| • access: | TCP / Port 995 (TLS) oder
TCP / Port 110 (POP3/STLS) |
| • user name: | <eight-digit IZ-username> |
| • polling intervall: | up to 10 queries in 10 minutes |
| • outgoing mail server: | smtp.hs-karlsruhe.de |
| • access: | TCP / Port 25 (SMTP/STARTTLS) |

Outside the network of HsKA you can only receive emails. To send from outside, please connect to VPN.

Spam-Filter

Incoming emails can be checked for spam, malware and viruses by the Barracuda Anti-Spam-Box (ASS).

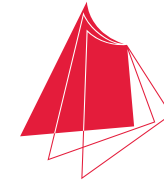
The spam filter can be activated in the AWM **http://www.iz.hs-karlsruhe.de/intern/awm**
Enter the function „Change entries“ under „My account“ (see flyer „Basic IT-Services“).

- Exchange-mailbox:
set the switch „mode“ to „exchange: active_via_ASS“
- Pop3-mailbox:
Your mails have to be forwarded to the ASS-Box by means of the following email address:
<iz-username>@iz-ass-its.hs-karlsruhe.de

Please note:

- an email-forwarding to an external address is not possible anymore

Own SPAM-rules in the AWM under „Meine Blacklist“ are always executed.



Hochschule Karlsruhe
Technik und Wirtschaft
UNIVERSITY OF APPLIED SCIENCES

Näher dran.

IZ Informations-
zentrum

**IT-Services
for Experts**

IZ-(Information Center) User Helpdesk

Monday - Friday
8am to 2pm (lecture period)
10am to 1pm (semester break)

Building LI, Room 133
Phone: (0721) 925-2305
Fax: (0721) 925-2301

E-Mail: iz-helpdesk@hs-karlsruhe.de
Web: www.hs-karlsruhe.de/iz
Twitter: @hska_iz

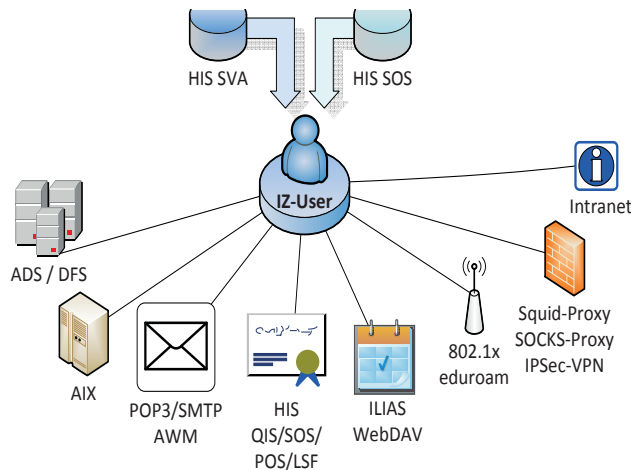
01/2018

Who should read this?

The Pool-PC cover the basic needs for all users. With this flyer you get the possibility to use your own hardware and optimize it for your daily work.

My identity - my account data

When you matriculate at HsKA, your data gets stored in the university management system. This also takes place for professors, lectures and university employees. You gain access to services of the HsKA network with your HsKA access data.



Access to the HsKA network

For complete integration of external devices in the HsKA network there is a IPsec based VPN access.

- host name: **vpn.hs-karlsruhe.de**
- access: UDP+TCP/10000 (IPsec)
- group name: *fhka*
- shared secret: *fhka*
- user name: <eight-digit IZ-username>

Alternatively you can access a centralized UNIX server via a secure shell over the internet. From that server you can connect to your target directory via secure shell.

- host name: **login.hs-karlsruhe.de**
- access: TCP / Port 22 (SSH)
- user name: <eight-digit IZ-username>

Troubleshooting Laptop / Windows

1. to check whether the VPN gateway is reachable

Start > Run > cmd >

ping vpn.hs-karlsruhe.de

If the destination network is unreachable the access to the internet is corrupted. VPN access is not possible. The problem is at your internet connection (home network, HsKA access network, external network)

2. to check whether mainframe is reachable

ping login.hs-karlsruhe.de

If the destination network is unreachable the VPN tunnel can not be built. In most cases the error is on the client side.

Possible causes:

- Wrong system preferences. Correct to System Control > Network Connections > Properties of the LAN Connection > Internet protocol TCP/IP:
 - DHCP active!
 - No static IP address is set!
- Firewall blocks the vpn connection.

3. Check the proxy configuration of your browser

Access to the HsKA network with mobile devices

(a) LAN access

Connect your device to a marked network port and connect via VPN to the HsKA network.

(b) WLAN access 8021x

Connect your device via 802.1x to the HsKA wireless network with the SSID **HsKA-8021x** directly by using the following settings:

- security: WPA1/2 Enterprise
- encryption: TKIP/AES
- outer authentication: EAP-TTLS, PEAP
- outer identity: *anonymous@hs-karlsruhe.de*
- CA certificate: DTAG-Root-CA-2
- inner authentication: MSCHAPv2,PAP
- Innere Identität: <IZ-username>@hs-karlsruhe.de

Important:

For a secure connection the root certificate provided by „Telekom Deutschland GmbH“ is necessary.

Installation:

<https://www.pki.dfn.de/fileadmin/PKI/zertifikate/deutsche-telekom-root-ca-2.crt>



Access to the Internet

To access the internet via the HsKA network, you have to set a proxy server.

(a) Web-Proxy

For the web orientated communication protocols HTTP / HTTPS / FTP use the following settings:

- host name: **proxy.hs-karlsruhe.de**
- access: TCP / Port 8888
- user name: <eight-digit IZ-username>

Manual Proxy Settings?

Enter the HsKA proxy settings for HTTP, HTTPS, FTP:
proxy.hs-karlsruhe.de, Port: 8888

Enter exception for HsKA addresses (no proxy for):

IE, Chrome: *.hs-karlsruhe.de;193.196.64.*;
localhost;127.0.0.1;10.*.*.*

Firefox: *.hs-karlsruhe.de;193.196.64.0/18;
localhost, 127.0.0.1; 10.0.0.0/8